

Series 22 Alternators

www.unipoint.com.tw



Unique Quality · Unique Value · Unipoint

NEW 22 Series

Heavy Duty Alternators

Date: FEB, 2011

Ref: UNI-22 ALT Series

ISO-9001 & TS-16949 Certified



ALT-1002



12V, 150A, w/5/16" battery post, Std. J180 mount

Used on: Various Medium & Heavy Duty Trucks, School & Shuttle Buses including: Bluebird, Ford, Freightliner, GMC, Kenworth, Mack, Navistar, Peterbilt, Thomas, Volvo, Western Star, w/Caterpillar, Cummins & Detroit & Navistar Diesel Eng's.

Cummins No.'s - 3604666AX, 3604668RX, 3675158RX, 3675222RX, 3675240RX

Delco No.'s - 10459188, 10459189, 10459190, 10459191, 10459192, 10459193, 1117905, 19010105, 19010147, 19020300, 19020302, 19020303, 19020358, 19020359, 19020364, 19020365, 19020377, 19020801, 19020806

Ford No.'s - F6HT-10300-FA, F6HZ-10346-C, GL-366

ALT-1004



12V, 150A, w/1/4" battery post, Std. J180 mount

Used on: Various Medium & Heavy Duty Trucks, School & Shuttle Buses including: Bluebird, Ford, Freightliner, GMC, Kenworth, Mack, Navistar, Peterbilt, Thomas, Volvo, Western Star, w/Caterpillar, Cummins & Detroit & Navistar Diesel Eng's.

Case No.'s - 104256A1

Caterpillar No.'s - 0R3527, 121-4134

Cummins No.'s - 3935527, 3935528, 3935529

Delco No.'s - 10459205, 10459216, 10459217, 10459472, 19020305, 19020306, 19020309, 19020310, 19020381

Ford No.'s - F3HT-10300-DA, F3HT-10300-EA, F3HT-10300-FA, F3HZ-10346-E, F3HZ-10346-J, F4HT-10300-GA, F4HT-10300-HA, F4HT-10300-JA, F4HT-10300-LA, F5HZ-10346-B, F6HT-10300-BA, F6HT-10300-CA, F6HZ-10346-A, F6HZ-10346-B, GL-333, GL-336, GL-359, GL-364, GL-365

ALT-1003



12V, 150A, pad mount

Used on: Various Medium & Heavy Duty Trucks, School & Shuttle Buses including: Bluebird, Ford, Freightliner, GMC, Kenworth, Mack, Navistar, Peterbilt, Thomas, Volvo, Western Star, w/Caterpillar, Cummins & Detroit & Navistar Diesel Eng's.

Delco No.'s - 10459320, 10459321, 19020388, 19020389, 19020803, 19020804, 19020889

Ford No.'s - 4C4Z-10346-FA, 4C4Z-10346-GA

ALT-1101



24V, 70A, Std. J180 mount

Used on: Trucks with Cummins, Timberjack, New Holland and Komatsu engines

Caterpillar No.'s - 0R8279, 107-7977, 1322156

Cummins No.'s - 3251135, 3675174RX, 3920617, 3920618, 3935531, 4000590

Delco No.'s - 10459026, 1117897, 1117900, 1117944, 19010108, 19010111, 19010148, 19010182, 19010185, 19010193, 19010195, 19010199, 19011192, 19020383

Komatsu No.'s - 600-825-3120, 600-825-3150, 600-825-3151, 600-825-3160, 600-825-3161, 600-825-3210, 600-825-3261, 600-861-3111, 673-581-6230

Nikko No.'s - 0-35000-0390, 0-35000-0391, 0-35000-0392, 0-35000-0460, 0-35000-0461, 0-35000-0471, 0-35000-0480

Onan No.'s - 190-1011

ALT-1008



12V, 130A, Std. J180 mount

Used on: 1990-2002 various Chevrolet & GMC trucks & Bluebird buses.

Cummins No.'s - 3675156RX, 3675225RX, 4083445

Delco No.'s - 10459023, 10459456, 19020375

Unipoint 22 Series alternators will replace 100, 130 & 145A models as well as Delco 21SI series

Series 22 Alternators

www.unipoint.com.tw



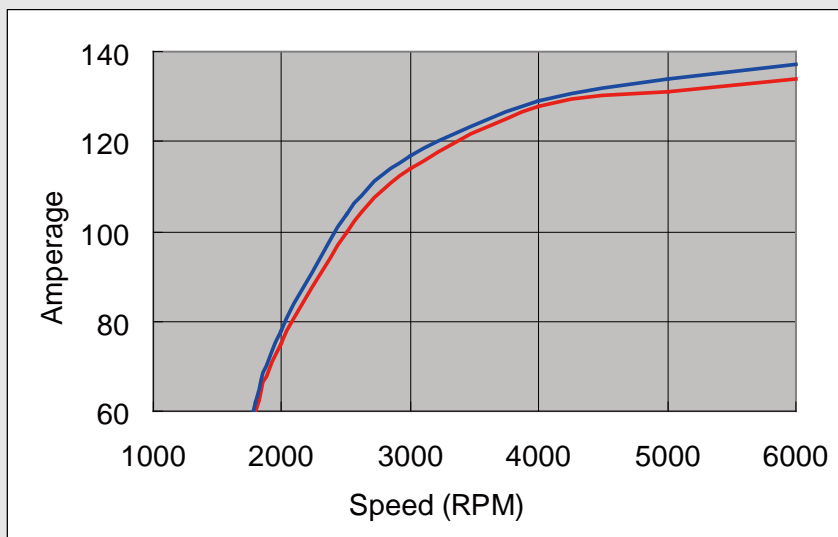
Unique Quality · Unique Value · Unipoint

Features / Benefits:

- Unipoint 22 Series alternators are designed & manufactured to exceed O.E. specifications & performance.
- Overall performance curve below indicates Unipoint increased output compared to O.E. under hot test condition.
- Durability testing in continuous high temperatures & critical speed confirmed Unipoint enhanced service life compared to O.E.
- Unipoint design ensures superior materials & manufacturing processes on all critical components to withstand the toughest adverse operating conditions.

Amperage Output vs. RMP Speed in Hot Test Condition

Current Performance

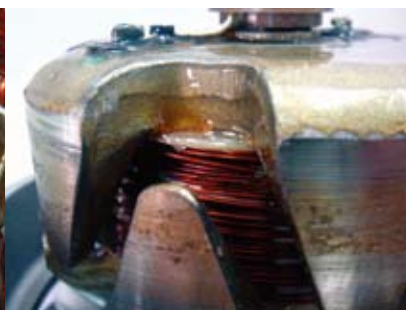


UNI — (blue line)
OE — (red line)

RPM	OE	UNI
1600	29	30
1800	60	62
2000	75	78
2500	100	104
3000	114	117
4000	128	129
5000	131	134
6000	134	137



Inferior varnish process on O.E. alternator causes noisy operation & interference between internal stator & rotor components.



Collapsed OE needle bearing after critical speed durability test